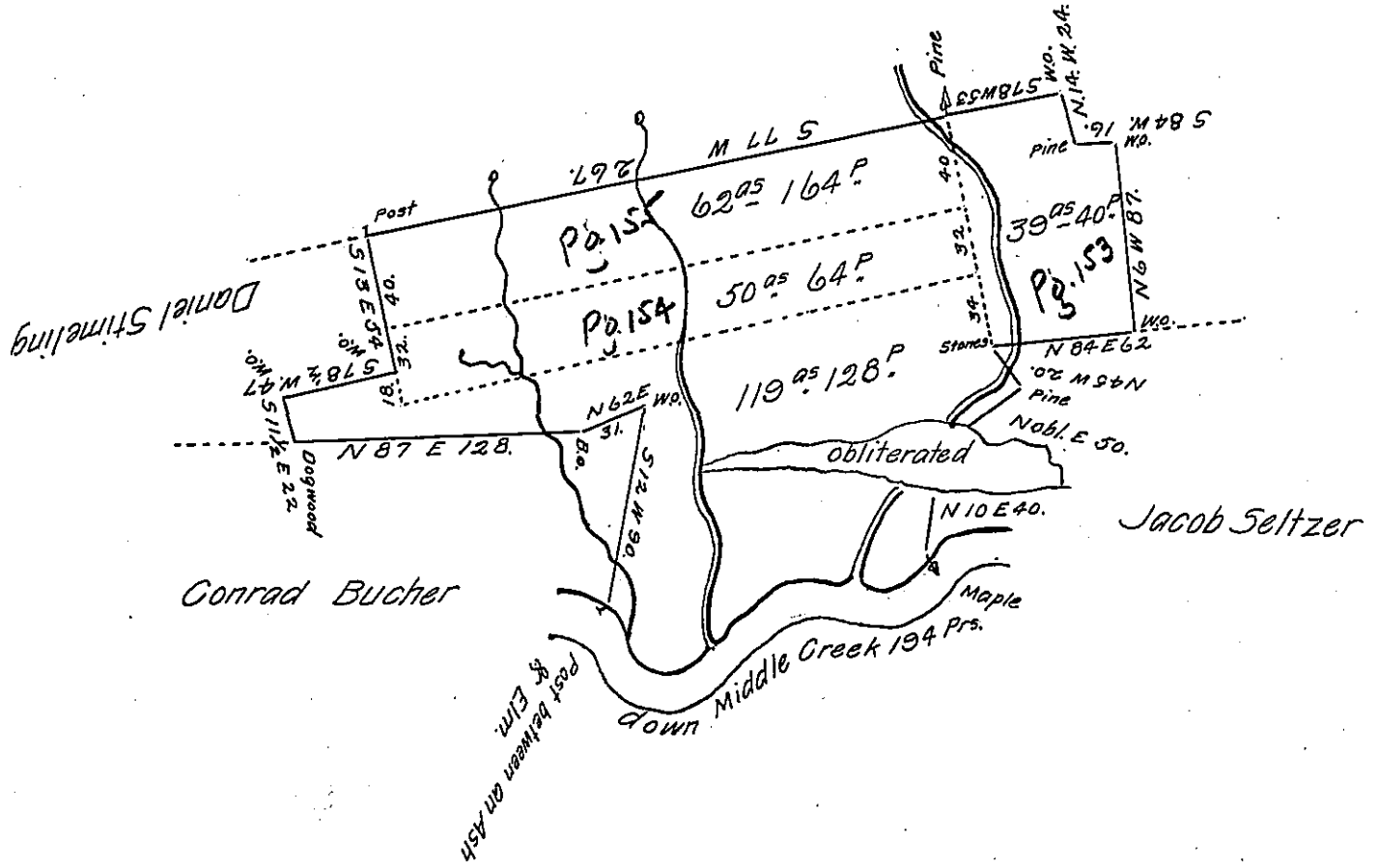


The courses of Middle Creek

- S 38 E 34
- N 70 E 14
- N 36 E 72
- S 65 E 47
- N 75 E 27.



A draught of Four tracts of land containing in the whole Two Hundred & Seventy two Acres fifty six Perches & allowance as by their several Returns in the Surveyor Generals Office all in the names of Melchor Stock will appier & C.

To Daniel Brodhead Esquire }
Surveyor General of Pennsylvania }

Pr
Frd^k Evans D.S.

62	164
50	64
119	128
39	40
272	56

IN TESTIMONY that the above is a copy of the original remaining on file in the Department of Internal Affairs of Pennsylvania, made conformably to an Act of Assembly approved the 16th day of February, 1833, I have hereunto set my Hand and caused the Seal of said Department to be affixed at Harrisburg, this twentysixth day of November 1906.

Isaac R. Brown
Secretary of Internal Affairs